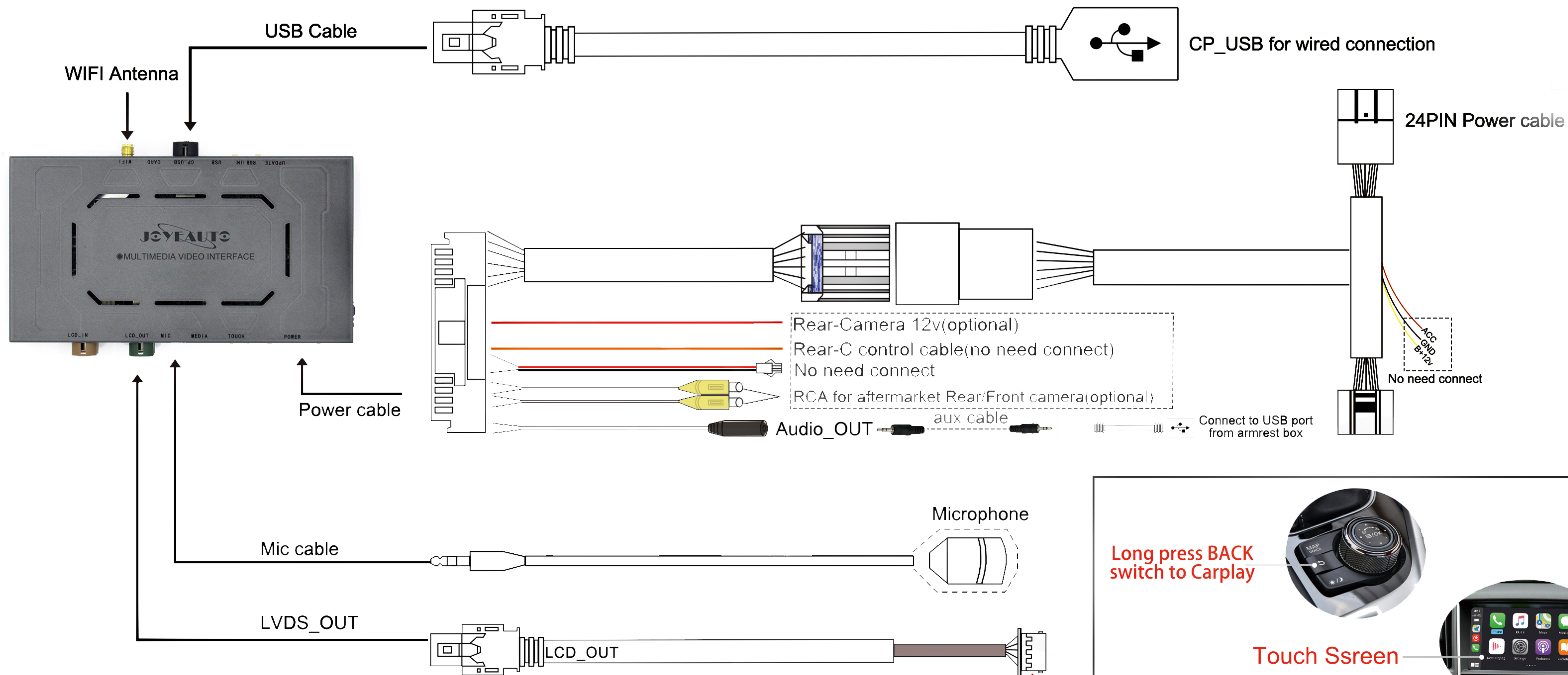
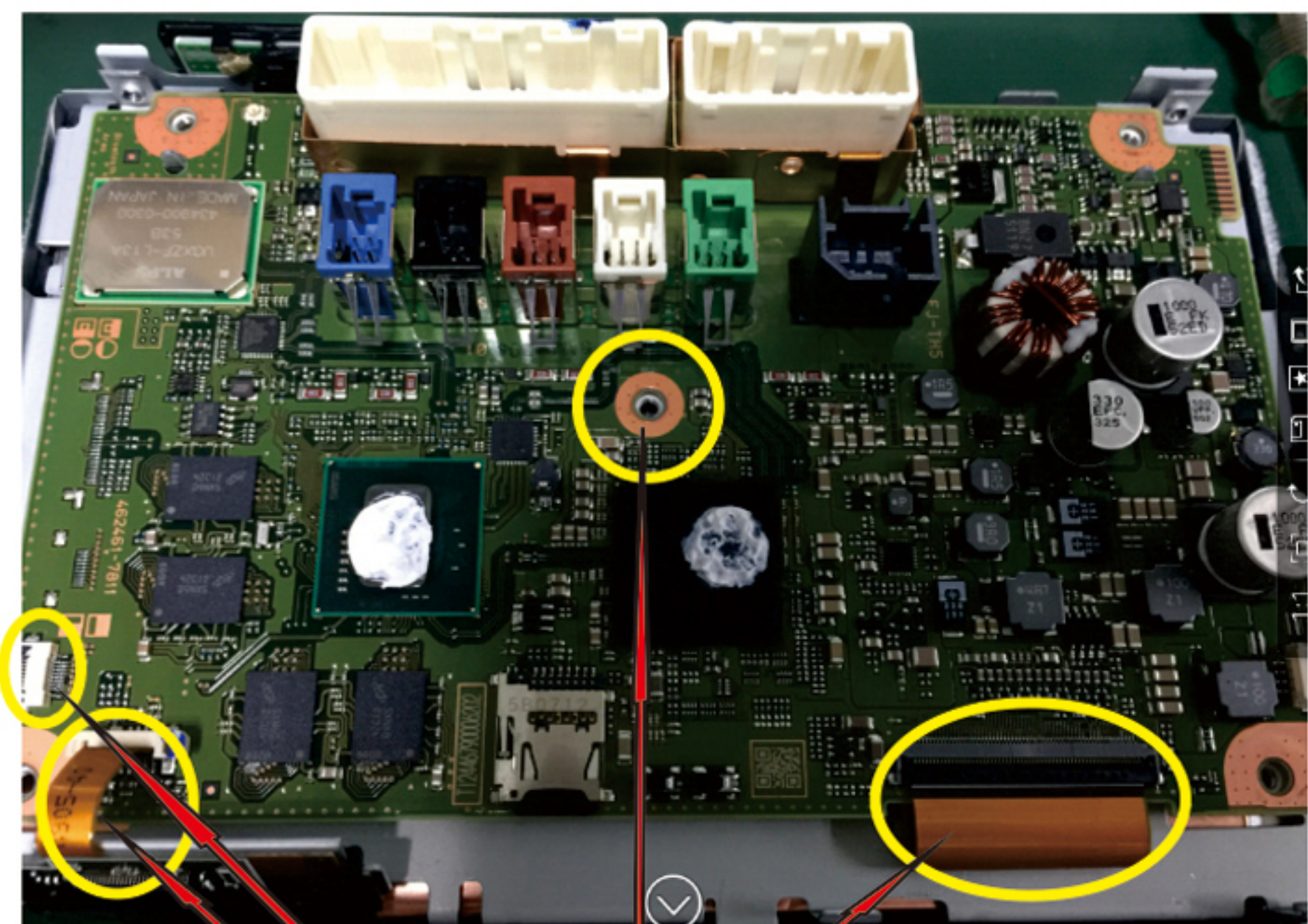
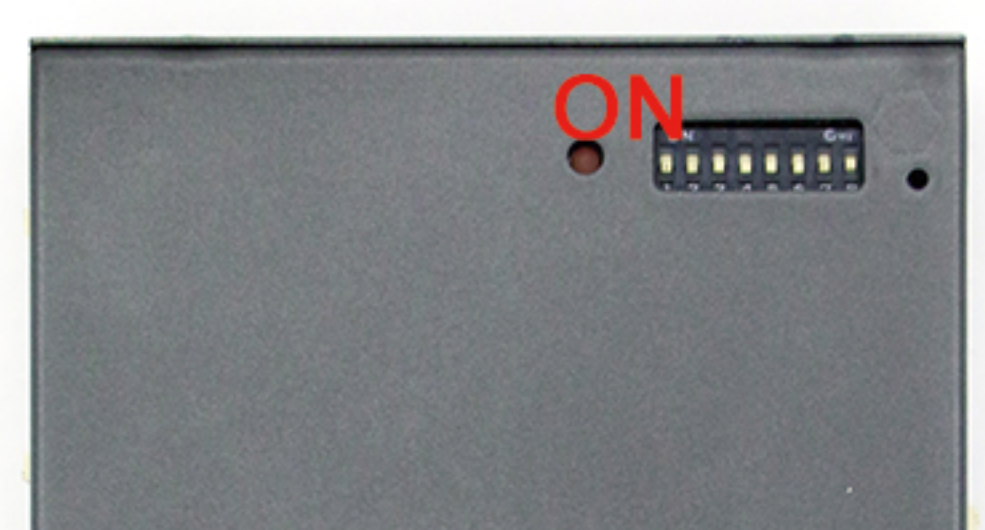


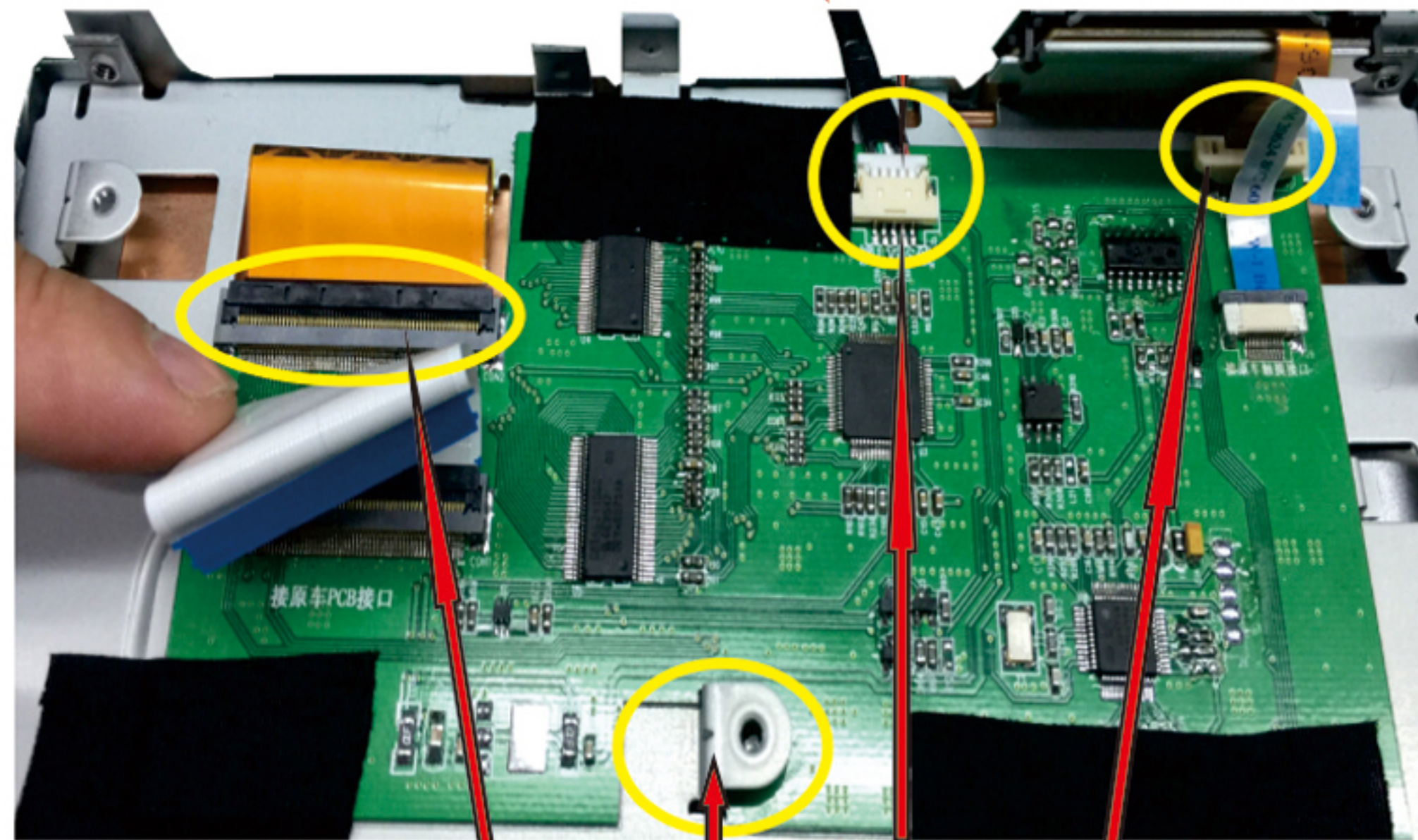
Infiniti Wireless CarPlay Installation Diagram



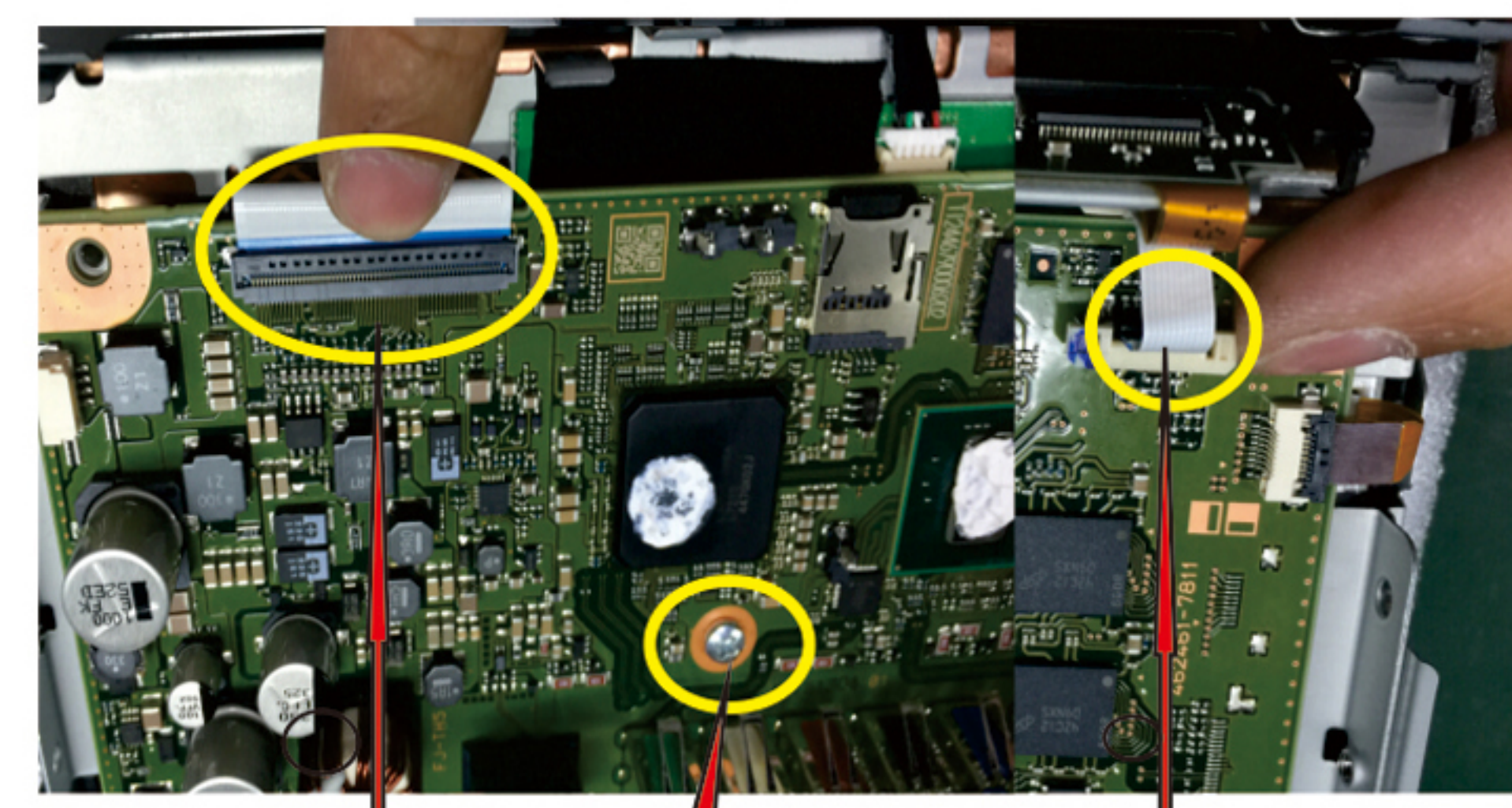
Dip Switch	Status	Description
4	ON	Reverse guideline OFF
	OFF	Reverse guideline ON
8	ON	Original Rear Camera
	OFF	Aftermarket Rear Camera
1,2,3,5,6,7 no function, set all OFF.		



1, Open the back cover of the screen, remove the screws in the middle of the board and untie the three cables to remove the board first



2, Install the screen switch board on the back of the screen docking the 10P touch line, 60P screen cable and LVDS line (note the LVDS outlet position).
3, The corresponding card of the board is clamped at the bottom of the middle screw bracket, and it can be fixed by adding a little acetate tape. (Note that an insulating spacer needs to be added to the bottom of the board)



4, Restore the original car board, lay the middle screws, and insert the 60P and 12P cables into the corresponding original car seat.